

**INSTALLATION DISCLAIMER NOTES:**

- It is important that the proper Cush suspension is chosen for the trailer application. The following criteria must be considered when selecting a suspension: required suspension capacity, loaded frame-to-ground measurement, ride height, axle travel, axle spacing, and axle GAWR.
- It is the responsibility of the installer to determine the correct location of the suspension in order to provide the proper trailer load distribution. The gross axle weight rating (GAWR) of each axle must not exceed the rated capacity of any of the components involved. The suspension capacity ratings are for suspension components and axle beam only.
- Required cross member locations are shown. Actual size and shape may vary per trailer design. It is the responsibility of the suspension installer to ensure structural adequacy of the trailer frame and related cross members. Verify that the actual trailer cross member locations correspond with those specified on the suspension drawing.
- It is the responsibility of the suspension installer to read the instructions on all the drawing sheets thoroughly before proceeding with a suspension installation.

**CUSTOMER TORQUE INSTRUCTIONS:**

- ONLY USE GENUINE CUSH PARTS
- It is the customer's responsibility to check and tighten fasteners to specified torque at installation, after the suspension has been in operation for 3000 miles, and at suspension inspection cycles. Failure to do so can result in loss of warranty.
- Torque values given are specified for the fasteners in the condition supplied by Cush Corporation. DO NOT APPLY ANY ADDITIONAL LUBRICANTS.
- CAUTION: Fasteners should never be reused if removed or loss of clamp load occurs. For proper joint clamping contact Cush for replacement fasteners.
- CAUTION: Over-torquing fasteners could result in material failure.

**Torque Specifications**

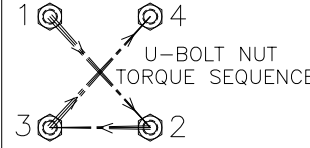
Note	Use	SizeGrade	Torque (ft*lbs).
1	Spring Retainer Bolt	0.50-13UNC grd5	40 to 50
2	Spring Pivot Mount Nut/Bolt	0.75-10UNC grd5	210 to 235
3	1/2" Axle U-Bolts Nut Torque	0.63-11UNC grd8	160 to 200
4	3/4" Axle U-Bolts Nut Torque	0.75-10UNC grd8	280 to 340
5	Equalizer Pivot Mount Nut	0.875-14UNF grd8	550 to 595

**INSTALLATION CLEARANCE NOTES:**

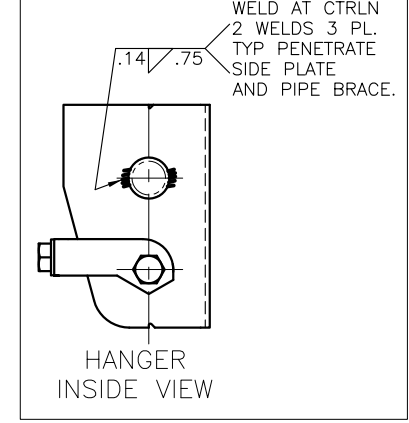
- It is the responsibility of the installer to ensure that proper clearances exist.
- INSPECTION:** 30-DAY, 90-DAY, & at every brake lining change.
- Check installation clearance requirements.
  - Check for any signs of wear or component interferences.
  - Check suspension attachment welds for signs of problems.
  - Check that all bolts are in place and securely torqued.
  - Check pivot bushings & clamping connections for problems.
  - Check that the trailer is level.
  - Check tire wear that might indicate an alignment problem.

**U-BOLT INSTALLATION NOTES:**

- WARNING:** Do not apply any lubricants to the u-bolts
- Snug u-bolts evenly before applying torque. Check that u-bolts are parallel and square to axle.
  - Torque u-bolts in a three step process to avoid an improperly clamped axle and resulting damage. Torque the u-bolts in an "x" pattern with each torque step (1-2-3-4). This allows the u-bolt to stretch/relax and hold torque. Proper tightening will allow equal amount of thread above each nut.



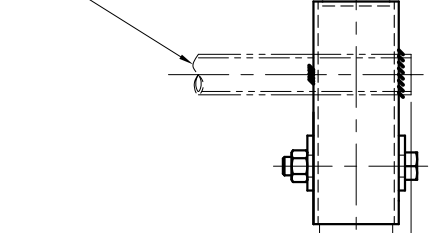
U-Bolts	3/4"-16UNF	5/8"-11UNC
First Step-1/3 of Final torque	(100 ft*lbs)	(50 ft*lbs)
Second Step-2/3 of Final torque	(185 ft*lbs)	(100 ft*lbs)
Third Step-Final torque	(280-340 ft*lbs)	(160-200 ft*lbs)



**Axle Spacing Based on Equalizer Length**

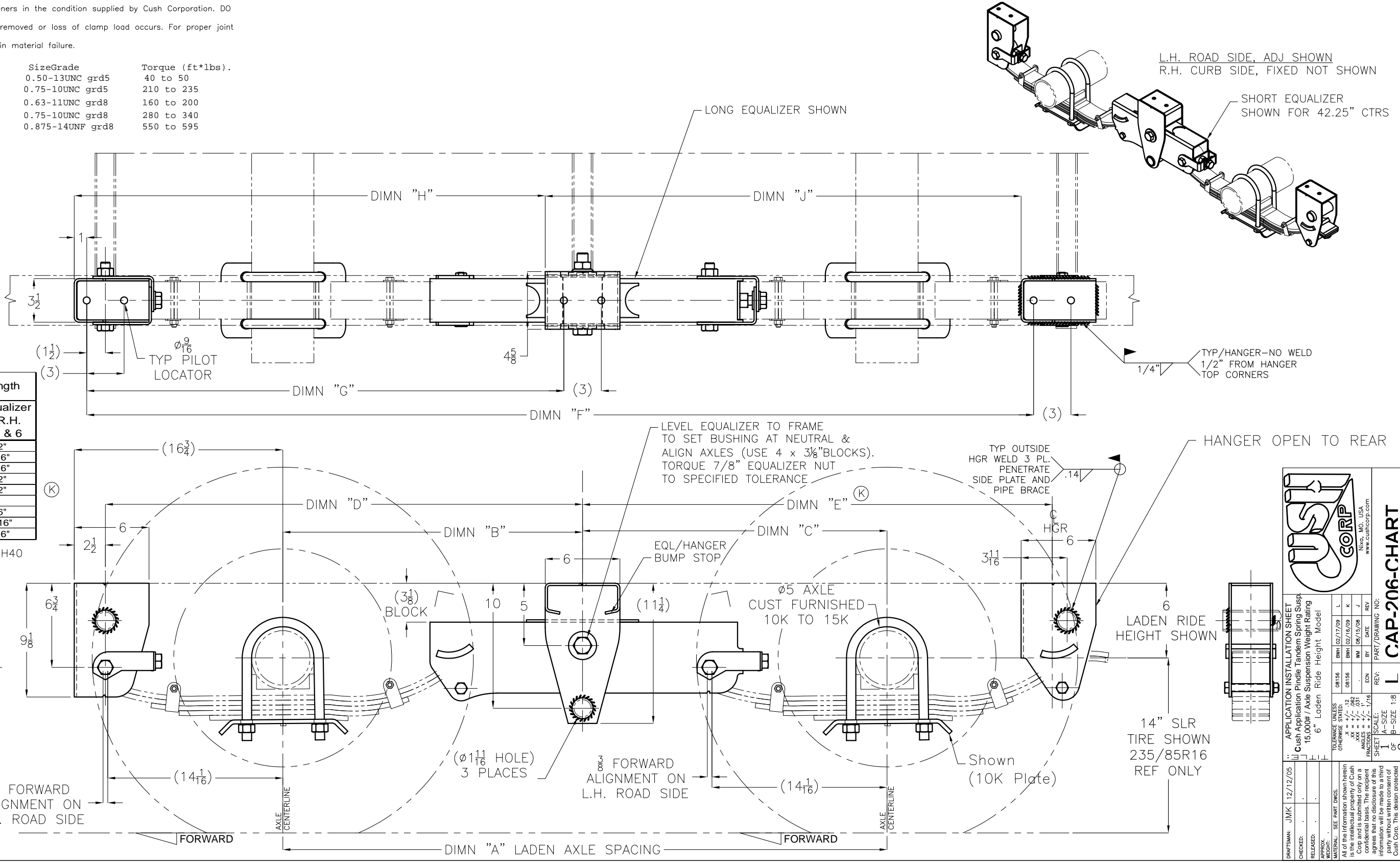
Dimensions	Short Equalizer L.H. & R.H. Items 24 & 25	Long Equalizer L.H. & R.H. Items 5 & 6
"A"	42 1/4"	48 1/2"
"B"	21 1/8"	24 1/16"
"C"	21 1/2"	24 7/16"
"D"	35 3/16"	38 1/2"
"E"	34 13/16"	37 1/2"
"F"	70"	76"
"G"	35 3/16"	38 5/6"
"H"	34 11/16"	37 13/16"
"J"	35 5/16"	38 3/16"

CUSTOMER FURNISHED 1.25" SCH40 PIPE BRACE - 3 PLACES.



OA PIPE LG= SC + 4.50 MIN  
(3") WIDE SLIPPER SPRING CUSTOMER FURNISHED See Chart

FORWARD ALIGNMENT ON L.H. ROAD SIDE



**CAP-206-CHART**

ITEM	DESCRIPTION	REV	DATE
1	APPLICATION INSTALLATION SHEET	1	08/15/08
2	Cush Application Pindle Tandem Spring Susp. 15,000# / Axle Suspension Weight Rating 6" Laden Ride Height Model	2	02/12/09

SCALE: 1" = 1'-0" (A-SIZE)  
1/2" = 1'-0" (B-SIZE)  
1/4" = 1'-0" (D-SIZE)

DRWTSN: JMK 12/12/05  
CHECKER: [ ]  
RELEASED: [ ]  
WEIGHT: [ ]

ALL INFORMATION SHOWN HEREIN IS THE INTELLECTUAL PROPERTY OF CUSH CORP. AND IS SUBMITTED ONLY ON A CONFIDENTIAL BASIS. THE RECIPIENT AGREES TO HOLD THIS INFORMATION IN STRICT CONFIDENCE AND TO RETURN IT TO CUSH CORP. UPON REQUEST. THIS DESIGN IS PROTECTED BY PATENT AND TRADE SECRET LAWS.