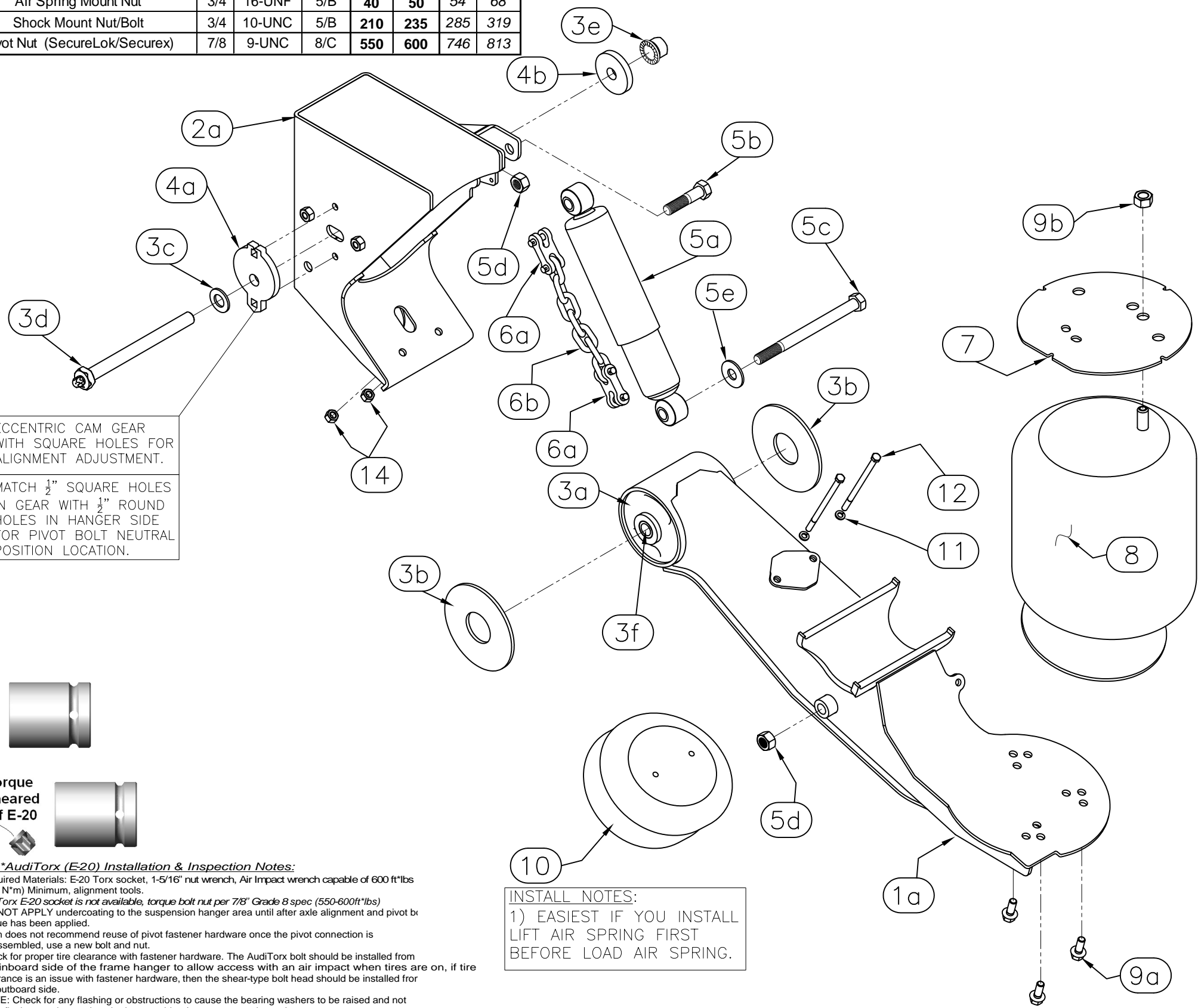
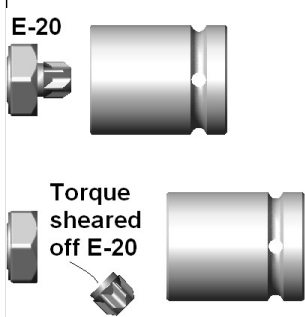


Customer to torque all fasteners!				(Ft*Lbs)		(Nm)	
General Fastener Torque Specs	Size	Thread	Grade	Min.	Max.	Min	Max.
Air Spring Mount Bolt	3/8	16-UNC	5/B	25	35	34	47
Air Spring Mount Nut	1/2	13-UNC	5/B	25	35	34	47
Air Spring Mount Bolt	1/2	13-UNC	5/B	40	50	54	68
Air Spring Mount Nut	3/4	16-UNF	5/B	40	50	54	68
Shock Mount Nut/Bolt	3/4	10-UNC	5/B	210	235	285	319
Pivot Nut (SecureLok/Securex)	7/8	9-UNC	8/C	550	600	746	813



ECCENTRIC CAM GEAR WITH SQUARE HOLES FOR ALIGNMENT ADJUSTMENT.  
MATCH 1/2" SQUARE HOLES IN GEAR WITH 1/2" ROUND HOLES IN HANGER SIDE FOR PIVOT BOLT NEUTRAL POSITION LOCATION.

**INSTALL NOTES:**  
1) EASIEST IF YOU INSTALL LIFT AIR SPRING FIRST BEFORE LOAD AIR SPRING.



- \*AudiTorx (E-20) Installation & Inspection Notes:**
- Required Materials: E-20 Torx socket, 1-5/16" nut wrench, Air Impact wrench capable of 600 ft\*lbs (813 N\*m) Minimum, alignment tools.
  - If a Torx E-20 socket is not available, torque bolt nut per 7/8" Grade 8 spec (550-600ft\*lbs)
  - DO NOT APPLY undercoating to the suspension hanger area until after axle alignment and pivot bolt torque has been applied.
  - Cush does not recommend reuse of pivot fastener hardware once the pivot connection is disassembled, use a new bolt and nut.
  - Check for proper tire clearance with fastener hardware. The AudiTorx bolt should be installed from the inboard side of the frame hanger to allow access with an air impact when tires are on, if tire clearance is an issue with fastener hardware, then the shear-type bolt head should be installed from the outboard side.
  - NOTE: Check for any flashing or obstructions to cause the bearing washers to be raised and not allow flush mounting against the hanger sides (gear or eccentric type).
  - Check proper axle alignment, see installation manual for instructions on alignment.
  - Snug the pivot fasteners so that the alignment washers do not move while applying initial torque, recheck alignment.
  - Torque the shear-type pivot bolt with the E-20 Torx drive socket tool until the bolt's Torx head shears off.
  - The E-20 Torx drive socket should fully engage the Torx shear head before and while applying torque.
  - Apply paint to the sheared away Torx area as a rust preventative.

Item	Description: CUU-25C-J09L Parts	Cush P/ N:	Qty
<b>1</b>	<b>Beam Assembly</b>		
1a	Roadside (LH) Beam for Weld-on axle mount	W0445-3	1
1b	Curbside (RH) Beam for Weld-on axle mount	W0445-4	1
<b>2</b>	<b>Frame Bracket, Wingless, Weld-on (4.75")</b>		
2a	Roadside (LH) Hanger, Trak-Align, P=8" Tall Hanger w/Lift	W0444-1	1
2b	Curbside (RH) Hanger, Trak-Align, P=8" Tall Hanger w/Lift	W0444-2	1
<b>3</b>	<b>Pivot Bushing Kit (Per Hanger/ Beam)</b>	<b>K0334</b>	<b>2</b>
3a	Bushing, 6.75" Long 1.25"ID	C0052	1
3b	Wear Washer, 0.25" thk	C0061	2
3c	Washer 0.875" SAE Thru-Hard	H2101	1
3d	AudiTorx HHCS 0.875"-9 UNC x 10"lg grd8	H0124	1
3e	Nut, SecureLok Nut 0.875"-9 UNC	H1106	1
3f	Bushing Insert, Reducer from 1.25" OD to 0.9"ID	T0063	2
<b>4</b>	<b>Pivot Alignment Kit (Per Hanger)</b>	<b>K0335</b>	<b>2</b>
4a	Alignment Washer, Eccentric w/Square Hole (Outer)	F0552	1
4b	Alignment Gear, Fixture/Bearing Plate (Inner)	F0626	1
<b>5</b>	<b>Kit, Shocks &amp; Shock Mounting Hardware (Pair)</b>	<b>K0040</b>	<b>1</b>
5a	Shock 17.8"Max/12"Min	C0078	2
5b	HHCS, 0.75-10unc x 3.25"lg, Grd 5	H0204	2
5c	HHCS, 0.75-10unc x 9.5"lg, Grd 5	H0201	2
5d	Nut, Top-lock, 0.75-10unc, grd C	H1201	4
5e	Washer 3/4" ID, USS	H2203	2
<b>6</b>	<b>Kit, Chain Restaint</b>	<b>K0095</b>	<b>2</b>
6a	D-D Midlink	C0075	2
6b	3/8" Chain P70 (7 Free Links)	C0179	1
<b>Parts in Box P/ N: K0186</b>		<b>Cush P/ N:</b>	<b>Qty</b>
<b>7</b>	<b>Spacer Top of Air Spring, 0.19" Tall Weld-on Plate</b>	<b>F0407</b>	<b>2</b>
<b>8</b>	<b>Air Spring, (Firestone W01-358-9580 (Hend S20127))</b>	<b>C0060-F</b>	<b>2</b>
<b>9</b>	<b>AS Hardware Kit Bagged Together</b>	<b>K0054</b>	<b>1</b>
9a	HHCS, Flangelock 0.5-13UNC x 1"	H0304	8
9b	L'Nut, Nylock 0.75-16UNF	H1202	2
<b>10</b>	<b>Lift Air Spring, (Goodyear 2b9-251)</b>	<b>C0080</b>	<b>2</b>
<b>11</b>	<b>Washer, Split-lock 0.38</b>	<b>H2401</b>	<b>4</b>
<b>12</b>	<b>HHCS, Flangelock 0.38 UNC x 6.5"long</b>	<b>H0408</b>	<b>4</b>
<b>14</b>	<b>L'Nut 0.5-13UNC, Toplock</b>	<b>H1302</b>	<b>4</b>
<b>Std. Add-On Options (purchased separately)</b>		<b>Cush P/ N:</b>	<b>Qty</b>
	Cross-Member 41" Long C4 x 5.4#/ft ("B"=35")	<b>C0224-41</b>	<b>1</b>
	Cross-Member 48" Long C4 x 5.4#/ft ("B"=41")	<b>C0224-48</b>	<b>1</b>
	Manual toggle air spring lift kit Air control Valve for 1 axle lift	<b>ACK-0021-M</b>	<b>1</b>

DRAFTSMAN: jmk 11/24/08	CHECKED: . . .	RELEASED: . . .	WEIGHT: N/A	MATERIAL: SEE PART DWGS.	TOLERANCE UNLESS OTHERWISE STATED: .X = +/- .12 .XX = +/- .062 XXX = +/- .031 ANGLES = +/- .1°	ECN	BY	DATE	REV
PART LIST INSTALLATION SHEET Cush UltraLIFT Underslung Lift 25,000# Gross Suspension Weight Rating 6"-9" RIDE HEIGHT UNDER Hanger Dual AS Lift						www.cushcorp.com		SHEET 2 OF 2	
SCALE: A-SIZE: NTS B-SIZE D-SIZE				REV: PART/DRAWING NO:		SPEC NO:		CUU-25CF-J09L	