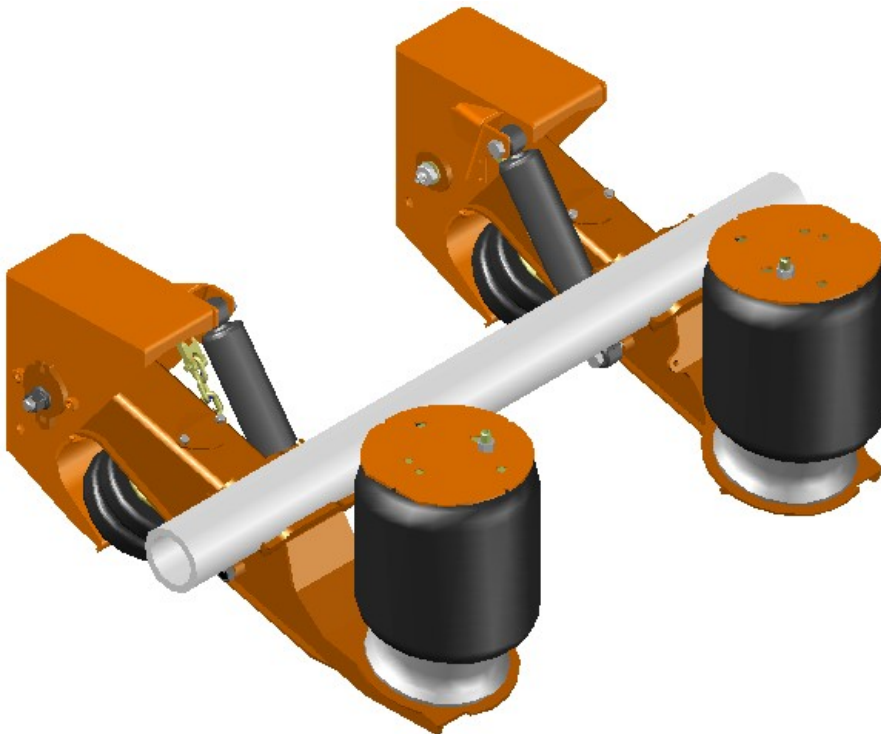




Giving the World a Better Ride

# Trailer Lift CUU Model 25K and 30K

**Cush Under-mount Ultra-LIFT designed to be the most compact lift axle for a Lowboy/ Lowmount Trailer**



#### Trac-Align Pivot Kit

- o SecureLOK NUT
- o AudiTorx Shear Bolt
- o Eccentric Adjustment
- o Dual Wear Washers
- o Dual Rate Bushing
- o Weldable Alignment Washers



#### Standard Features

- o Capacity: 25,000 or 30,000 lb.
- o Ride Heights: 5.5" to 13"
- o Trac-Align Pivot Kit
- o Non-captured axle
- o Axle Alignment of +/-0.38"
- o Flush Mount Shock
- o Optimized Lightweight Design
- o Large Bore HD shock

#### Options

- U-Bolt Kit
- Integrated Chain Restraint
- Nylon Shock Strap Kit
- Non-Lift Kit Hanger
- 5.75" Diameter 30K Axle
- Cush Integrated Axle



www.cushcorp.com