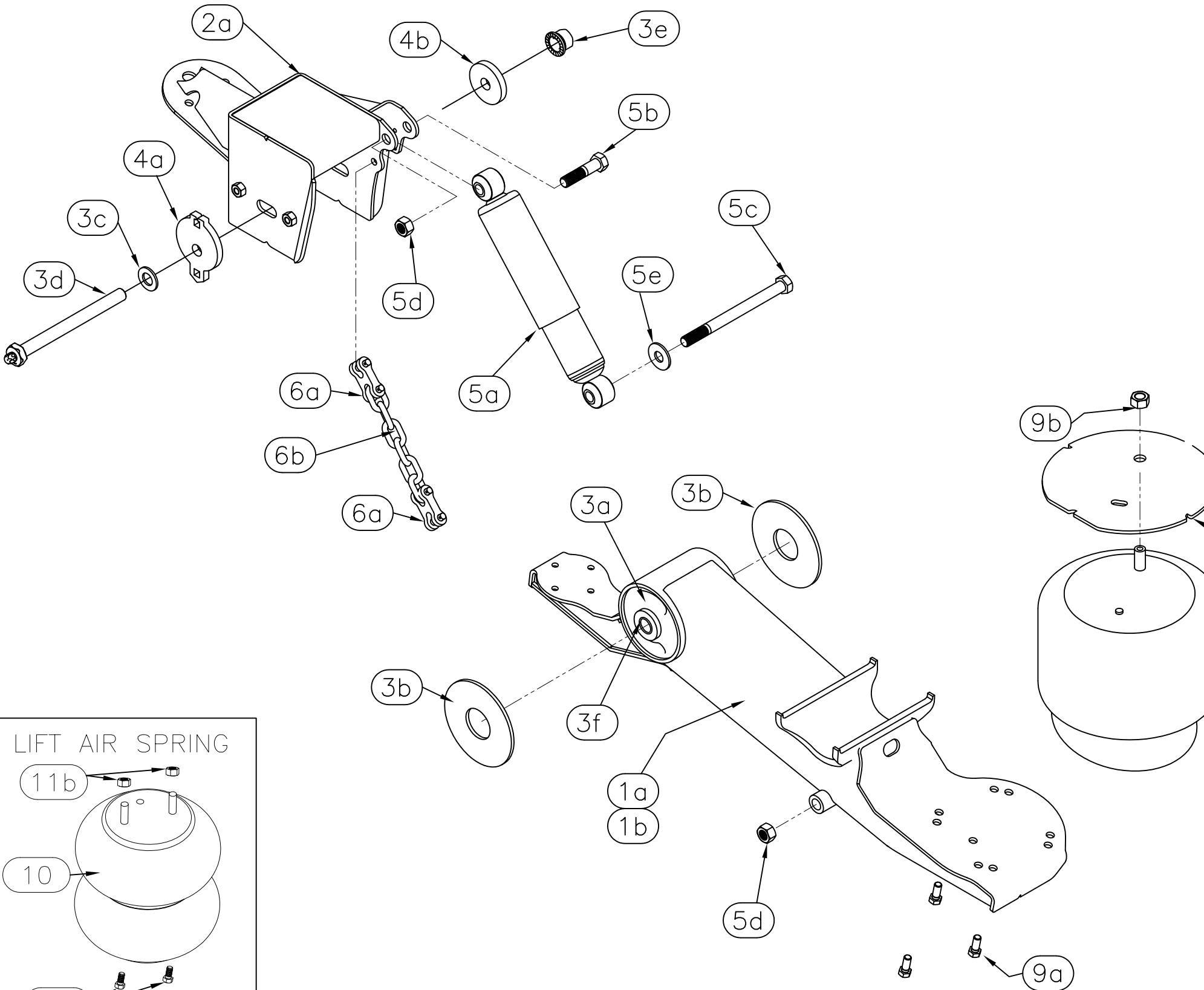


Fastener Torque Specs	Size	Thread	Grade	(Ft*Lbs)		(Nm)	
				Min.	Max.	Min	Max.
Air Spring Bottom Mount Bolt	1/2	13-UNC	5/B	40	50	54	68
Air Spring Top Mount Nut	3/4	16-UNF	5/B	40	50	54	68
Shock Mount Nut/Bolt	3/4	10-UNC	5/B	210	235	285	319
Pivot Nut (SecureLok/Securex)	7/8	9-UNC	8/C	550	600	746	813



Item	Description: CLC-25C-005L Parts	Cush P/ N:	Qty
1	Beam Assembly		
1a	Roadside (LH) Beam for Weld-on axle mount w/front lift	W0127-3	1
1b	Curbside (RH) Beam for Weld-on axle mount w/front lift	W0127-4	1
2	Frame Bracket, Wingless, Weld-on		
2a	Roadside (LH) Hanger, Trak-Align, P=6" w/front lift	W0649-3	1
2b	Curbside (RH) Hanger, Trak-Align, P=6" w/front lift	W0649-4	1
3	Pivot Bushing Kit (Per Hanger/ Beam)	K0334	2
3a	Bushing, 6.75" Long 1.25"ID	C0052	1
3b	Wear Washer, 0.25" thk	C0061	2
3c	Washer 0.875" SAE Thru-Hard	H2101	1
3d	AudiTorx HHCS 0.875"-9 UNC x 10"lg grd8	H0124	1
3e	Nut, SecureLok Nut 0.875"-9 UNC	H1106	1
3f	Bushing Insert, Reducer from 1.25" OD to 0.9"ID	T0063	2
4	Trac-Align Pivot Alignment Kit (Per Hanger)	K0335	2
4a	Alignment Washer, Eccentric w/Square Hole (Outer)	F0552	1
4b	Alignment Gear, Fixture/Bearing Plate (Inner)	F0626	1
5	Kit, Shocks & Shock Mounting Hardware (Pair)	K0040	1
5a	Shock 17.8"Max/12"Min	C0078	2
5b	HHCS, 0.75-10unc x 3.25"lg, Grd 5	H0204	2
5c	HHCS, 0.75-10unc x 9.5"lg, Grd 5	H0201	2
5d	Nut, Top-lock, 0.75-10unc, grd C	H1201	4
5e	Washer 3/4" ID, USS	H2203	2
6	Kit, Chain Restaint	K0037	2
6a	D-D Midlink	C0075	2
6b	3/8" Chain P70 (6 Free Links)	C0086-6	1
Parts in Box P/ N:		Cush P/ N:	Qty
7	Spacer Top of Air Spring, 0.19" Tall Weld-on Plate	F0407	2
8	Air Spring, (Goodyear 1R12-494)	C0079	2
9	AS Hardware Kit Bagged Together	K0054	1
9a	HHCS, Flangelock 0.5-13UNC x 1"	H0304	8
9b	L'Nut, Nylock 0.75-16UNF	H1202	2
10	Lift Air Spring, (Goodyear 2B9-251)	C0080	2
11	AS Hardware Kit Bagged Together	K0031	1
11a	HHCS, Flangelock 0.38-UNC x 1"LG	H0401	4
11b	L'Nut, Nylock 0.5-13 UNC	H1301	4

***AudiTorx (E-20) Installation & Inspection Notes:**

- Required Materials: E-20 Torx socket, 1-5/16" nut wrench, Air Impact wrench capable of 600 ft*lbs (813 N*m) Minimum, alignment tools.
- If a Torx E-20 socket is not available, torque bolt/nut per 7/8" Grade 8 spec (550-600ft*lbs)
- DO NOT APPLY undercoating to the suspension hanger area until after axle alignment and pivot torque has been applied.
- Cush does not recommend reuse of pivot fastener hardware once the pivot connection is disassembled, use a new bolt and nut.
- Check for proper tire clearance with fastener hardware. The AudiTorx bolt should be installed from the inboard side of the frame hanger to allow access with an air impact when tires are on, if tire clearance is an issue with fastener hardware, then the shear-type bolt head should be installed from the outboard side.
- NOTE: Check for any flashing or obstructions to cause the bearing washers to be raised and not allow flush mounting against the hanger sides (gear or eccentric type).
- Check proper axle alignment, see installation manual for instructions on alignment.
- Snug the pivot fasteners so that the alignment washers do not move while applying initial torque, recheck alignment.
- Torque the shear-type pivot bolt with the E-20 Torx drive socket tool until the bolt's Torx head shears off.
- The E-20 Torx drive socket should fully engage the Torx shear head before and while applying torque.
- Apply paint to the sheared away Torx area as a rust preventative.

Torque sheared off E-20

DRAFTSMAN: JMK 01/12/03
 CHECKED: . . .
 RELEASED: . . .
 WEIGHT: N/A

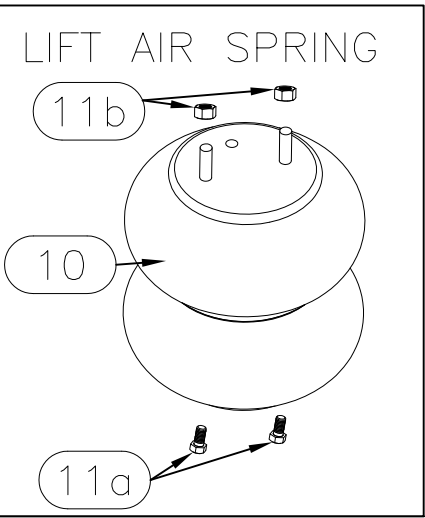
MATERIAL: SEE PART DWGS.
 TOLERANCE UNLESS OTHERWISE STATED:
 .X = +/- .12
 .XX = +/- .062
 .XXX = +/- .031
 ANGLES = +/- 1'

SCALE: A-SIZE
 B-SIZE 1:8
 D-SIZE 1:4

REV: PART/DRAWING NO:
 EC NO. REVISION DESCRIPTION DATE BY CHK'D

CUSH CORP
 PO Box 3742 SPRINGFIELD, MO. USA
 www.cushcorp.com

B CLC-25-005L



EC NO.	REVISION	DESCRIPTION	DATE	BY	CHK'D
-	b	CHANGED FROM SINGLE STEP INSERTS & WIDE HANGER TO ECONO	2/3/10	BGA	