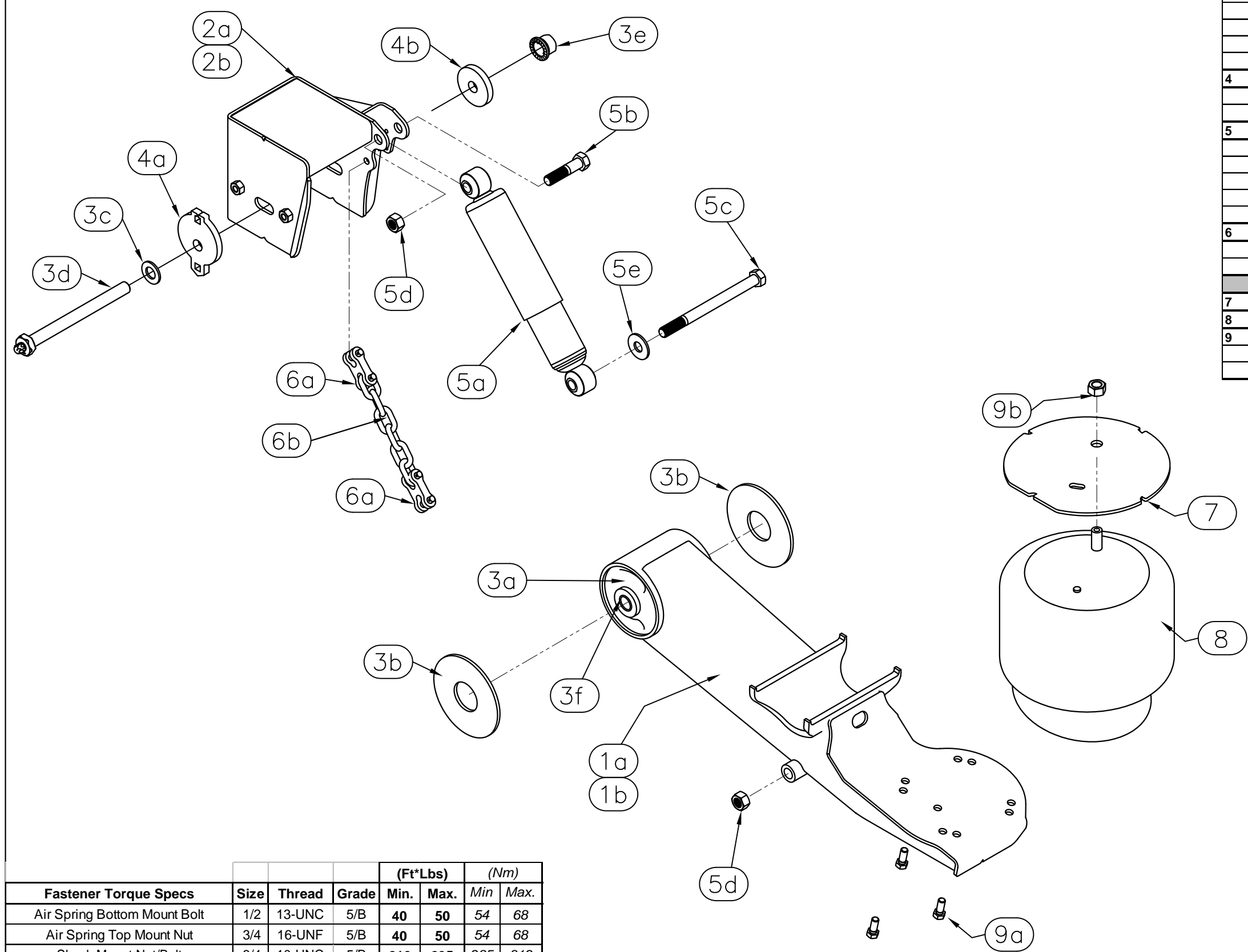
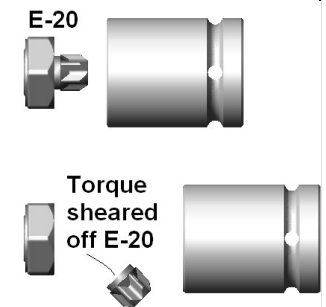


MODEL: CU/CY

Fastener Torque Specs	Size	Thread	Grade	(Ft*Lbs)		(Nm)	
				Min.	Max.	Min	Max.
Air Spring Bottom Mount Bolt	1/2	13-UNC	5/B	40	50	54	68
Air Spring Top Mount Nut	3/4	16-UNF	5/B	40	50	54	68
Shock Mount Nut/Bolt	3/4	10-UNC	5/B	210	235	285	319
Bushing Pivot Bolt & Nut	7/8	14-UNF	8/C	550	600	746	813



Item	Description: CLC-25C-005 Parts	Cush P/ N:	Qty
<b>1</b>	<b>Beam Assembly</b>		
1a	Roadside (LH) Beam for Weld-on axle mount	W0125-3	1
1b	Curbside (RH) Beam for Weld-on axle mount	W0125-4	1
<b>2</b>	<b>Frame Bracket, Wingless, Weld-on</b>		
2a	Roadside (LH) Hanger, Trak-Align, P=6" Tall Hanger	W0649-1	1
2b	Curbside (RH) Hanger, Trak-Align, P=6" Tall Hanger	W0649-2	1
<b>3</b>	<b>Pivot Bushing Kit (Per Hanger/ Beam)</b>	K0334	2
3a	Bushing, 6.75" Long 1.25"ID	C0052	1
3b	Wear Washer, 0.25" thk	C0061	2
3c	Washer 0.875" SAE Thru-Hard	H2101	1
3d	AudiTorx HHCS 0.875"-9 UNC x 10"lg grd8	H0124	1
3e	Nut, SecureLok Nut 0.875"-9 UNC	H1106	1
3f	Bushing Insert, Reducer from 1.25" OD to 0.9"ID	T0063	2
<b>4</b>	<b>Trac-Align Pivot Alignment Kit (Per Hanger)</b>	K0335	2
4a	Alignment Washer, Eccentric w/Square Hole (Outer)	F0552	1
4b	Alignment Gear, Fixture/Bearing Plate (Inner)	F0626	1
<b>5</b>	<b>Kit, Shocks &amp; Shock Mounting Hardware (Pair)</b>	K0040	1
5a	Shock 17.8"Max/12"Min	C0078	2
5b	HHCS, 0.75-10unc x 3.25"lg, Grd 5	H0204	2
5c	HHCS, 0.75-10unc x 9.5"lg, Grd 5	H0201	2
5d	Nut, Top-lock, 0.75-10unc, grd C	H1201	4
5e	Washer 3/4" ID, USS	H2203	2
<b>6</b>	<b>Kit, Chain Rest aint</b>	K0037	2
6a	D-D Midlink	C0075	2
6b	3/8" Chain P70 (6 Free Links)	C0086-6	1
<b>Parts in Box P/ N:</b>		<b>Cush P/ N:</b>	<b>Qty</b>
<b>7</b>	<b>Spacer Top of Air Spring, 0.19" Tall Weld-on Plate</b>	F0407	2
<b>8</b>	<b>Air Spring, (Goodyear 1R12-494)</b>	C0079	2
<b>9</b>	<b>AS Hardware Kit Bagged Together</b>	K0054	1
9a	HHCS, Flangelock 0.5-13UNC x 1"	H0304	8
9b	L'Nut, Nylock 0.75-16UNF	H1202	2



- \*AudiTorx (E-20) Installation & Inspection Notes:**
- Required Materials: E-20 Torx socket, 1-5/16" nut wrench, Air Impact wrench capable of 600 ft\*lbs (813 N\*m) Minimum, alignment tools.
  - If a Torx E-20 socket is not available, torque bolt nut per 7/8" Grade 8 spec (550-600ft\*lbs)
  - DO NOT APPLY undercoating to the suspension hanger area until after axle alignment and pivot bolt torque has been applied.
  - Cush does not recommend reuse of pivot fastener hardware once the pivot connection is disassembled, use a new bolt and nut.
  - Check for proper tire clearance with fastener hardware. The AudiTorx bolt should be installed from the inboard side of the frame hanger to allow access with an air impact when tires are on clearance is an issue with fastener hardware, then the shear-type bolt head should be installed from the outboard side.
  - NOTE: Check for any flashing or obstructions to cause the bearing washers to be raised and not allow flush mounting against the hanger sides (gear or eccentric type).
  - Check proper axle alignment, see installation manual for instructions on alignment.
  - Snug the pivot fasteners so that the alignment washers do not move while applying initial torque, recheck alignment.
  - Torque the shear-type pivot bolt with the E-20 Torx drive socket tool until the bolt's Torx head shears off.
  - The E-20 Torx drive socket should fully engage the Torx shear head before and while applying torque.
  - Apply paint to the sheared away Torx area as a rust preventative.

Fastener Torque Specs	Size	Thread	Grade	(Ft*Lbs)		(Nm)	
				Min.	Max.	Min	Max.
Air Spring Bottom Mount Bolt	1/2	13-UNC	5/B	40	50	54	68
Air Spring Top Mount Nut	3/4	16-UNF	5/B	40	50	54	68
Shock Mount Nut/Bolt	3/4	10-UNC	5/B	210	235	285	319
Pivot Nut (SecureLok/Securex)	7/8	9-UNC	8/C	550	600	746	813

DRAFTSMAN: JMK   01/12/03		PART LIST INSTALLATION SHEET			
CHECKED: . . .		Cush Weld-on Compac-Trac			
RELEASED: . . .		25,000# Gross Suspension Weight Rating		www.cushcorp.com	
WEIGHT: N/A		MATERIAL: SEE PART DWGS.		TOLERANCE UNLESS OTHERWISE STATED:	
All of the Information shown herein is the intellectual property of Cush Corp and is submitted only on a confidential basis. The recipient agrees that no disclosure of this information will be made to a third party without written consent of Cush Corp. This design protected by Cush patents or patents pending.		X = +/- .12 XX = +/- .062 XXX = +/- .031 ANGLES = +/- 1°		SHEET 2 OF 3	
EC NO. REVISION		DESCRIPTION		SCALE: A-SIZE B-SIZE 1:8 D-SIZE 1:4	
Updated to 6.75" ID hanger with Trac-Align		3-12-10		REV: B	
		DATE		PART/DRAWING NO: CLC-25-005	
		BY		SPEC NO:	
		CHK'D			