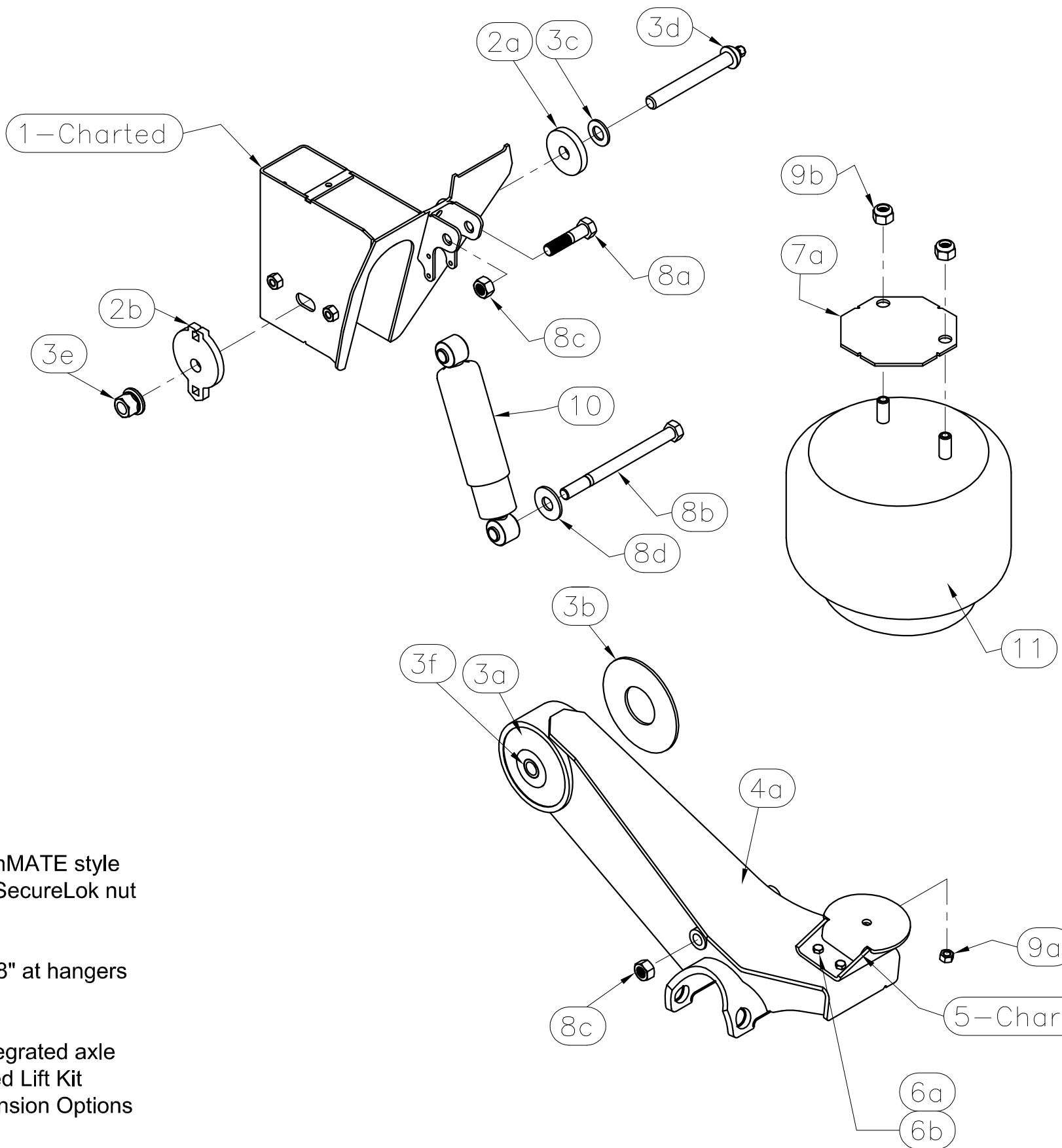


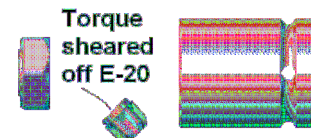
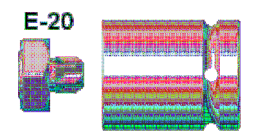
MODEL: CP25T	Fastener Torque Specs	Size	Thread	Grade	(Ft*Lbs)		(Nm)	
					Min.	Max.	Min	Max.
	Air Spring Tower Mount Nut	3/8	16-UNC	5/B	30	45	41	61
	Air Spring Bottom Mount TopLock Nut	1/2	13-UNC	5/B	25	35	34	47
	Air Spring Top Mount Nut	3/4	16-UNF	5/B	40	50	54	68
	Shock Mount Nut/Bolt	3/4	10-UNC	5/B	210	235	285	319
	Slot-Align Pivot Bolt & Nut	7/8	9-UNC	8/C	550	600	746	813



Item	Description: CP25T__ Parts	Qty	Cush P/N:	
			CLP25TW-14	CLP25TW-16
1	Weld-on Flange type hangers			
1a	Roadside (LH) SideMount Weld-on Hanger	1	W0677-1	W0673-1
1b	Curbside (RH) SideMount Weld-on Hanger	1	W0677-2	W0673-2
2	Pivot Bushing Kit (Per Hanger Side L/R)	2	K0335	K0335
2a	Round Alignment Washer, Inner and Outer	1	F0626	F0626
2b	Pointer Ecc Alignment Washer, Inner and Outer	1	F0525	F0525
3	Pivot Bushing Kit (Per Hanger Side L/R)	1	K0337	K0337
3a	Optimized Solid Rubber Bushing, 3.6" Long 1.25"ID	1	C3511-70	C3511-70
3b	Wear Washer, 0.25" thk	2	C0406	C0406
3c	Washer 0.875" SAE Thru-Hard	1	H2101	H2101
3d	AudiTorx HHCS 0.875"-9 UNC x 7"lg grd8	1	H0137	H0137
3e	Nut, SecureLok Nut 0.875"-9 UNC	1	H1106	H1106
3f	Bushing Insert, Reducer from 1.25" OD to 0.9"ID	2	T0063	T0063
4	BigFoot Beam Weldment for 5"rd axle, CushMate style			
4a	LH Beam Weldment, BigFoot style 3" offset	1	W1032-1	W1032-1
4b	RH Beam Weldment, BigFoot style 3" offset	1	W1032-2	W1032-2
5	Unv Offset Bolt-on Air Spring Tower Spacer - Height"	2	W0776-1.5	W0776-3.5
6	Kit, Air Spring Tower Mounting	1	K0419	K0419
6a	L'Nut, Toplock 0.375-16UNC	8	H1404	H1404
6b	HHCS Bolt 0.375-16UNC x 1.0"Long	8	H0701	H0701
Box of Parts:		Qty	Cush P/N:	Cush P/N:
7	Spacer Assembly, Top of Air Spring			
7a	0.19" Tall spacer Weld-on Plate, Octagon, Universal	2	F0790	F0790
8	Hardware kit, Mounting for Shocks	1	K0020	K0020
8a	HHCS, 0.75-10unc x 3.25"lg, Grd 5	2	H0204	H0204
8b	HHCS, 0.75-10unc x 9.5"lg, Grd 5	2	H0201	H0201
8c	Nut, locking, 0.75-10unc, grd C	4	H1201	H1201
8d	Washer 3/4" ID, USS	2	H2203	H2203
9	AS Hardware Kit Bagged Together	1	K0030	K0030
9a	Toplock nut 0.5-13UNC	2	H1302	H1302
9b	L'Nut, Nylock 0.75-16UNF	4	H1202	H1202
10	Shock, 16"max/10.7"min (Gabriel#85064)	2	C0226	C0226
11	Air Spring, (gy 1R14-171 / Conti 11_10.5A-16 P523/FS W(1-358-8091))	2	C0064	C0064

Features

- 25,000 lbs Capacity
- Non-Captured axle, BigFOOT CushMATE style
- Performance Shear pivot bolt and SecureLok nut
- Integrated shock mounting
- Optimized Rubber Bushing
- Trac-Align axle adjustment of +/- .38" at hangers
- Mounting heights from 14" to 18"
- Integrated HCV mountings
- Available as Customer or Cush integrated axle
- Available with or Customer mounted Lift Kit
- Available with other Add-on Suspension Options
- HCV kit ACK-0200
- Nylon shock strap kit



***AudiTorx (E-20) Installation & Inspection Notes:**

- Required Materials: E-20 Torx socket, 1-5/16" nut wrench, Air Impact wrench capable of 600 ft*lbs (813 N*m) Minimum, alignment tools
- If a Torx E-20 socket is not available, torque bolt nut per 7/8" Grade 8 spec (550-600ft*lbs)
- DO NOT APPLY undercoating to the suspension hanger area until after axle alignment and pivot bolt torque has been applied.
- Cush does not recommend reuse of pivot fastener hardware once the pivot connection is disassembled, use a new bolt and nut.
- Check for proper tire clearance with fastener hardware. The AudiTorx bolt should be installed from the inboard side of the frame hanger to allow access with an air impact when tires are on, if tire clearance is an issue with fastener hardware, then the shear-type bolt head should be installed from the outboard side.
- NOTE: Check for any flashing or obstructions to cause the bearing washers to be raised and not allow flush mounting against the hanger sides (gear or eccentric type).
- Check proper axle alignment, see installation manual for instructions on alignment.
- Snug the pivot fasteners so that the alignment washers do not move while applying initial torque, recheck alignment.
- Torque the shear-type pivot bolt with the E-20 Torx drive socket tool until the bolt's Torx head shears off.
- The E-20 Torx drive socket should fully engage the Torx shear head before and while applying torque.
- Apply paint to the sheared away Torx area as a rust preventative.

DRAFTSMAN: jmk	12/12/12	PART LIST INSTALLATION SHEET	
CHECKED: .		CushLite Performance 25K TopMount	
RELEASED: .		CushMate Axle Connection	
WEIGHT: N/A		For 5/8" wall 5" Rd Axle Beam	
MATERIAL: SEE PART DWGS.		Weld-on Hanger	
All of the information shown herein is the intellectual property of Cush Corp and is submitted only on a confidential basis. The recipient agrees that no disclosure of this information will be made to a third party without written consent of Cush Corp. This design protected by Cush patents or patents pending.		TOLERANCE UNLESS OTHERWISE SPECIFIED: X = +/- .12 XX = +/- .062 XXX = +/- .031 ANGLES = +/- 1'	REV: PART/DRAWING NO:
SHEET 2	SCALE: A-SIZE: NTS	REV: .	CLP25TW-RH_SPEC
OF 2	B-SIZE		
	D-SIZE		