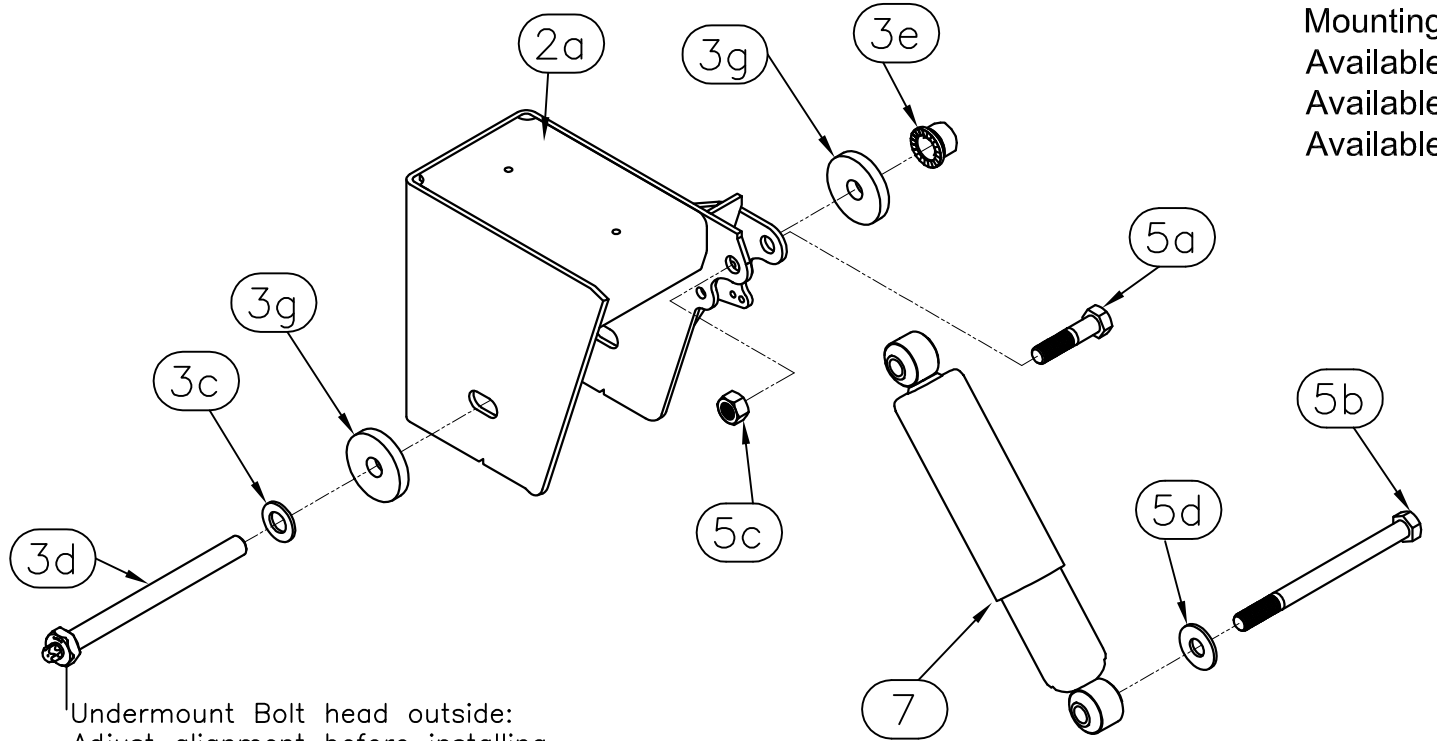


Customer to torque all fasteners!

| General Fastener Torque Specs | Size | Thread | Grade | (Ft*Lbs) | | (Nm) | |
|----------------------------------|------|--------|-------|----------|------|------|------|
| | | | | Min. | Max. | Min | Max. |
| Air Spring Bottom Mount Nut | 1/2 | 13-UNC | 5/B | 25 | 35 | 34 | 47 |
| Air Spring Bottom Mount Bolt | 1/2 | 13-UNC | 5/B | 40 | 50 | 54 | 68 |
| Air Spring Top Mount Nut | 3/4 | 16-UNF | 5/B | 40 | 50 | 54 | 68 |
| Shock Mount Nut/Bolt | 3/4 | 10-UNC | 5/B | 210 | 235 | 285 | 319 |
| (25K) U-Bolt Nut | 7/8 | 14-UNF | 8/C | 475 | 525 | 644 | 712 |
| AuditorX™ ShearBolt (SecureLok™) | 7/8 | 9-UNC | 8/C | 550 | 600 | 746 | 813 |

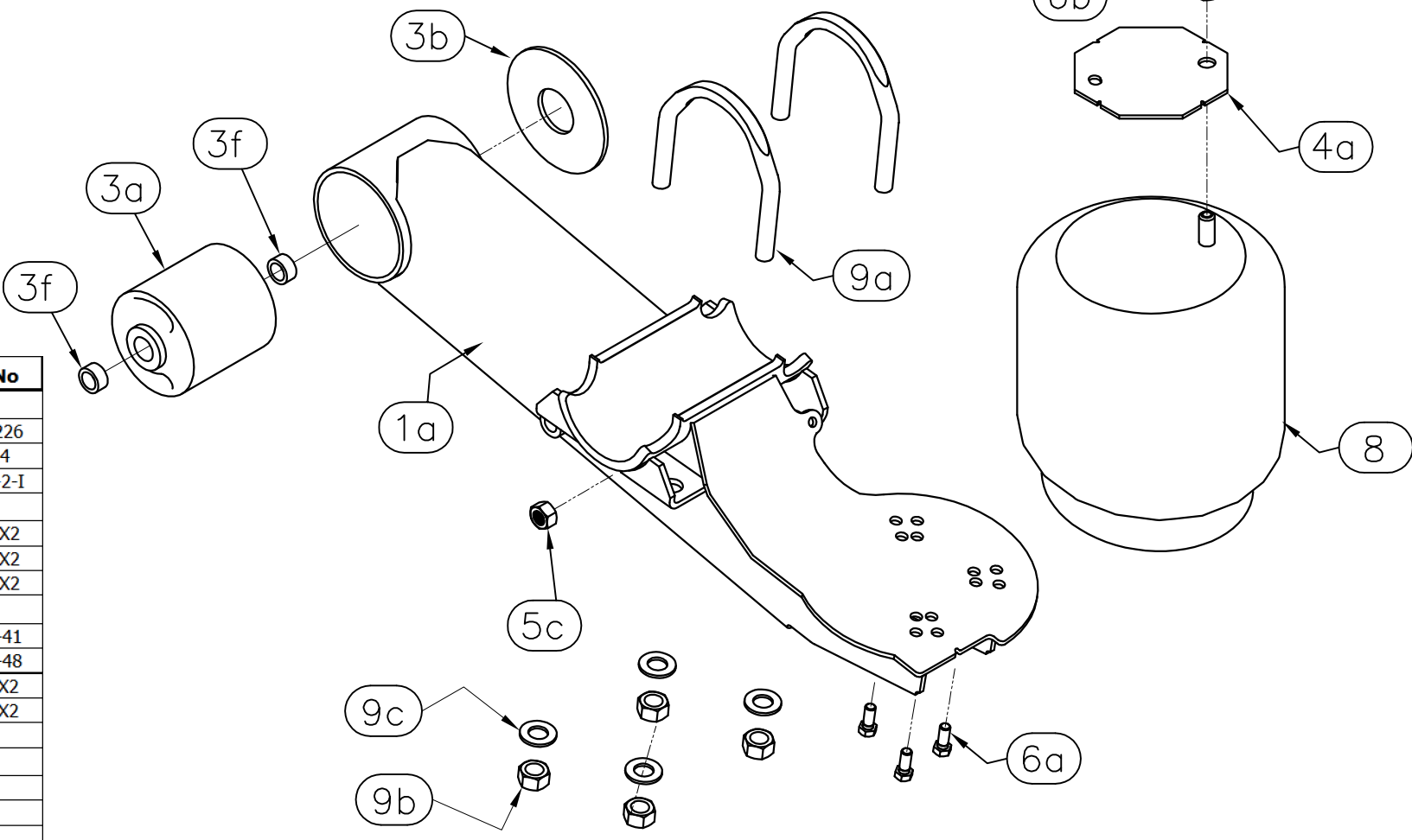
Features
 25,000 lbs Capacity
 Non-Captured axle
 Performance Shear pivot bolt and SecureLok nut
 Integrated HCV & flush shock mounting
 Industry standard dual rate bushing
 Slot-Align axle adjustment of +/- .38" at hangers
 Mounting heights from 7" to 10.5"
 Available as Customer or Cush integrated axle
 Available with bolt-on hangers
 Available with other Add-on Suspension Options



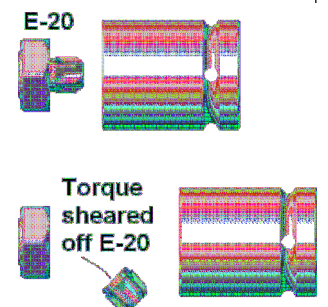
Undermount Bolt head outside:
 Adjust alignment before installing
 tires, easier to get to w/Air Impact

On "Cush Performance" Suspensions, Cush reserves the right to provide suspension option upgrades at no additional charge to Customer without notice.

| Suffix | Add-On Suspensions Options | Part No |
|--------|---|-----------|
| | Shock Options | |
| "-N1" | Shock Rebound Limiters for C0226, Nylon Shock strap kit (w/devises) | K1-C0226 |
| "-SI" | Cush mounted shocks, w/bolts loose (Standard is parts shipped loose in box) | A0024 |
| "-C" | Shock Chain Restraint under hanger kit (Cush Mounted, 1 kit/unit) | K0095-2-I |
| | Hanger Pivot Options | |
| "-TA" | Track-Align eccentric pivot adjustment upgrade from Slot-Adjust style | K0335X2 |
| "-RL" | Rack Lock Kit/unit, Add-on option for Track-Align only | K0340X2 |
| "-DW" | Dual wear washers inside of each hanger upgrade from only 1 to the inside | C0061X2 |
| | Hanger & Air Spring Support Options | |
| "-X1" | Cross-Member 41" Long C4 x 5.4#/ft ("B"=35") | C0224-41 |
| "-X2" | Cross-Member 47" Long C4 x 5.4#/ft ("B"=41") | C0224-48 |
| "-XF" | Pair of Front Flat Wing Hanger Gussets | F0629X2 |
| "-T12" | Large Diameter Air spring top plates, 12" diameter with Universal Mounts | F0407X2 |
| "-BC" | Bolt-on Hanger Connection and Air Spring Top Plates (Std Pattern) | |
| | Discounts | |
| "-DPH" | Discounted for Un-Painted Hangers/Unit | |
| "-DA" | Discounted for Customer supplied Air Springs | |
| "-DAS" | Discounted for Customer supplied Air Springs & Shocks | |



| Item | Performance Model Descriptions: CP25US9 Parts | Cush P/N: | Qty |
|----------------------|---|------------------|------------|
| 1 | Beam Assembly | | |
| 1a | Roadside (LH) Beam for U-Bolt & Weld-on axle mount | W0900-5 | 1 |
| 1b | Curbside (RH) Beam for U-Bolt & Weld-on axle mount | W0900-6 | 1 |
| 2 | Frame Bracket, Wingless, Weld-on (4.75") | | |
| 2a | Roadside (LH) Hanger, Slot-Align, P=9" Tall Hanger | W0425-1P | 1 |
| 2b | Curbside (RH) Hanger, Slot-Align, P=9" Tall Hanger | W0425-2P | 1 |
| 3 | Pivot Bushing Kit (Per Hanger Side L/R) | K0494 | 2 |
| 3a | Dual Rate Bushing, 6.75" Long 1.25"ID | C0052 | 1 |
| 3b | Wear Washer, 0.25" thk | C0061 | 1 |
| 3c | Washer 0.875" SAE Thru-Hard | H2101 | 1 |
| 3d | AudiTorx HHCS 0.875"-9 UNC x 10"lg grd8 | H0124 | 1 |
| 3e | Nut, SecureLok Nut 0.875"-9 UNC | H1106 | 1 |
| 3f | Bushing Insert, Reducer from 1.25" OD to 0.9"ID | T0063 | 2 |
| 3g | Round Alignment Washer, Inner and Outer | F0626 | 2 |
| Box of Parts: | | Cush P/N: | Qty |
| 4 | Spacer Assembly, Top of Air Spring | | |
| 4a | 0.19" Tall spacer Weld-on Plate, Octagon | F0790 | 2 |
| 5 | Bolt Kit, Mounting for Shock Pair | K0020 | 1 |
| 5a | HHCS, 0.75-10unc x 3.25"lg, Grd 5 | H0204 | 2 |
| 5b | HHCS, 0.75-10unc x 9.5"lg, Grd 5 | H0201 | 2 |
| 5c | Nut, Top-lock, 0.75-10unc, grd C | H1201 | 4 |
| 5d | Washer 3/4" ID, USS | H2203 | 2 |
| 6 | Bolt Kit, Air Spring Mounting (Top/Bottom) | K0054 | 1 |
| 6a | HHCS, Flangelock 0.5-13UNC x 1" | H0304 | 6 |
| 6b | L'Nut, Nylock 0.75-16UNF | H1202 | 2 |
| 7 | Shock 16"Max/10.7"Min (Gabriel #85064) | C0226 | 2 |
| 8 | Air Spring, (Firestone#9580/GY#1R12-467/Conti#1010-21P434) | C0060-F | 2 |
| 9 | Kit, U-Bolt w/Nuts & Washers (Hend: S-21140/4) | K0338 | 4 |
| 9a | Tapped U-Bolt, 7/8"-14UNF x 5" Round-6"Inside x 7.75" lg Gr 8 | HU107 | 1 |
| 9b | Nut, 7/8"-14 UNF | H1101 | 2 |
| 9c | Washer 0.875" SAE Thru-Hard | H2101 | 2 |



***AudiTorx (E-20) Installation & Inspection Notes:**

- Required Materials: E-20 Torx socket, 1-5/16" nut wrench, Air Impact wrench capable of 600 ft*lbs (813 N*m) Minimum, alignment tools
- If a Torx E-20 socket is not available, torque bolt nut per 7/8" Grade 8 spec (550-600ft*lbs)
- DO NOT APPLY undercoating to the suspension hanger area until after axle alignment and pivot bolt torque has been applied.
- Cush does not recommend reuse of pivot fastener hardware once the pivot connection is disassembled, use a new bolt and nut.
- Check for proper tire clearance with fastener hardware. The AudiTorx bolt should be installed from the inboard side of the frame hanger to allow access with an air impact when tires are on, if tire clearance is an issue with fastener hardware, then the shear-type bolt head should be installed from the outboard side.
- NOTE: Check for any flashing or obstructions to cause the bearing washers to be raised and not allow flush mounting against the hanger sides (gear or eccentric type).
- Check proper axle alignment, see installation manual for instructions on alignment.
- Snug the pivot fasteners so that the alignment washers do not move while applying initial torque, recheck alignment.
- Torque the shear-type pivot bolt with the E-20 Torx drive socket tool until the bolt's Torx head shears off.
- The E-20 Torx drive socket should fully engage the Torx shear head before and while applying torque.
- Apply paint to the sheared away Torx area as a rust preventative.

| DRAFTSMAN: jmk | 1/02/05 | PART LIST INSTALLATION SHEET | | | | | | | | | | | | | | | | | | | | | |
|--|----------------------------------|---|----------|---------------------------------------|----|------|-----|-------------|--|--|--|---------------|--|--|--|----------------|--|--|--|-----------------|--|--|--|
| CHECKED: . | | Cush Performance 25,000Lbs. UnderMount | | | | | | | | | | | | | | | | | | | | | |
| RELEASED: . | | 5" Round Axle U-Bolts & Weld Seat | | | | | | | | | | | | | | | | | | | | | |
| WEIGHT: N/A | | 7"-10.5" Ride Height (9" Std) | | | | | | | | | | | | | | | | | | | | | |
| MATERIAL: SEE PART DWGS. | | Add-On Features Available | | | | | | | | | | | | | | | | | | | | | |
| All of the Information shown herein is the Intellectual property of Cush Corp and is submitted only on a confidential basis. The recipient agrees that no disclosure of this information will be made to a third party without written consent of Cush Corp. This design protected by Cush patents or patents pending. | | <table border="1"> <tr> <th>TOLERANCE UNLESS OTHERWISE SPECIFIED:</th> <th>BY</th> <th>DATE</th> <th>REV</th> </tr> <tr> <td>X = +/- .12</td> <td></td> <td></td> <td></td> </tr> <tr> <td>XX = +/- .062</td> <td></td> <td></td> <td></td> </tr> <tr> <td>XXX = +/- .031</td> <td></td> <td></td> <td></td> </tr> <tr> <td>ANGLES = +/- 1°</td> <td></td> <td></td> <td></td> </tr> </table> | | TOLERANCE UNLESS OTHERWISE SPECIFIED: | BY | DATE | REV | X = +/- .12 | | | | XX = +/- .062 | | | | XXX = +/- .031 | | | | ANGLES = +/- 1° | | | |
| TOLERANCE UNLESS OTHERWISE SPECIFIED: | BY | DATE | REV | | | | | | | | | | | | | | | | | | | | |
| X = +/- .12 | | | | | | | | | | | | | | | | | | | | | | | |
| XX = +/- .062 | | | | | | | | | | | | | | | | | | | | | | | |
| XXX = +/- .031 | | | | | | | | | | | | | | | | | | | | | | | |
| ANGLES = +/- 1° | | | | | | | | | | | | | | | | | | | | | | | |
| SHEET 2 OF 3 | SCALE: A-SIZE: NTS B-SIZE C-SIZE | REV: PART/DRAWING NO: | Options: | | | | | | | | | | | | | | | | | | | | |
| | | CP25US9 | | | | | | | | | | | | | | | | | | | | | |

www.cushcorp.com

This drawing and any attachments are intended solely for customers of CUSH Corp. The information contained in this file is confidential in nature and protected from further use or disclosure under U.S. Pub.L.106-102, 113 U.S. Stat.1338 (1999), and may be subject to attorney-client or other legal privilege. Your use or disclosure of this information for any purpose other than that intended by its loan to you or your company is strictly prohibited, and may subject you to fines and/or penalties under federal and state law. If you are not the intended recipient of this transmission, please DESTROY ALL COPIES RECEIVED and confirm destruction to Cush Corp via written notification.