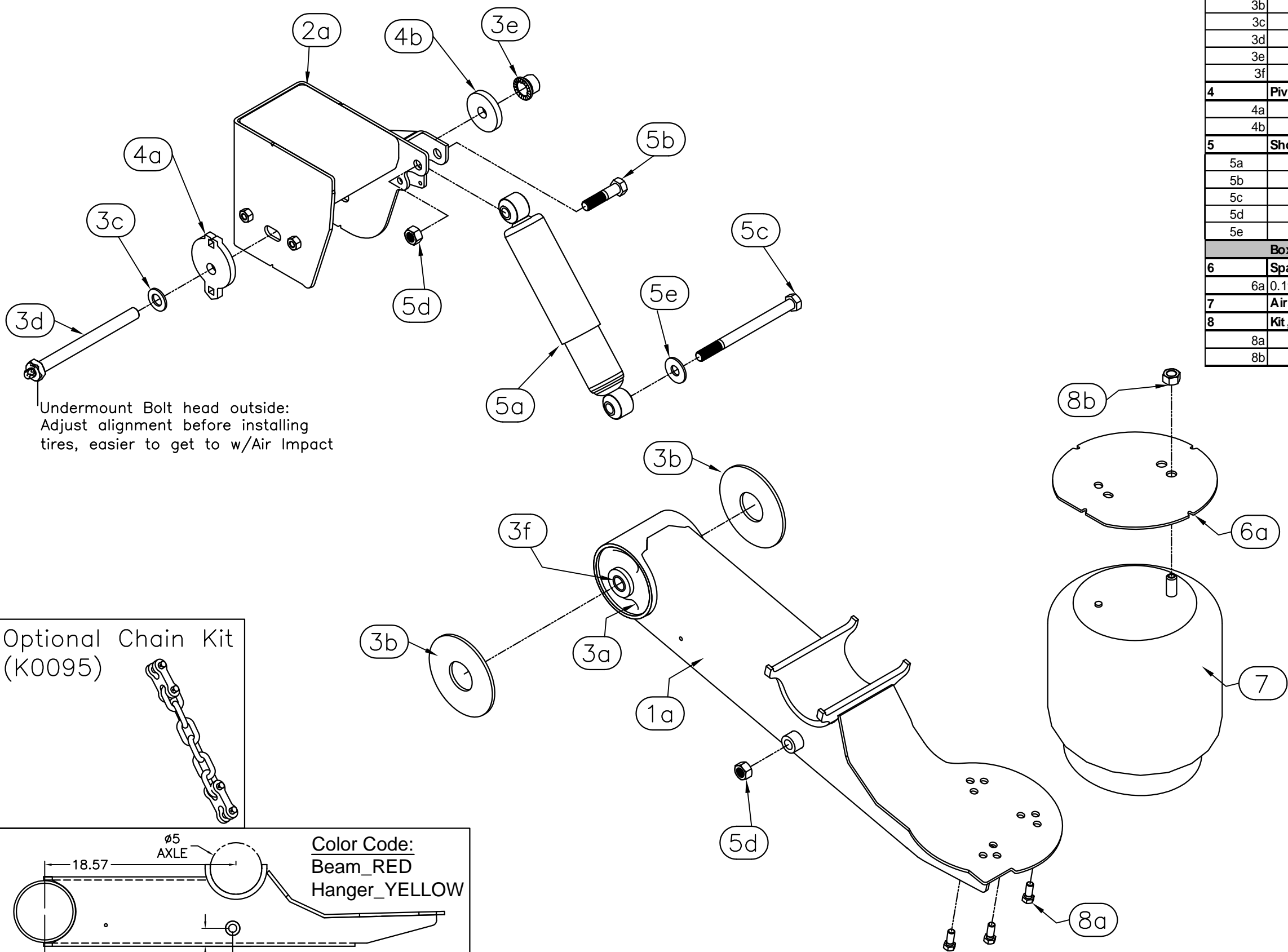
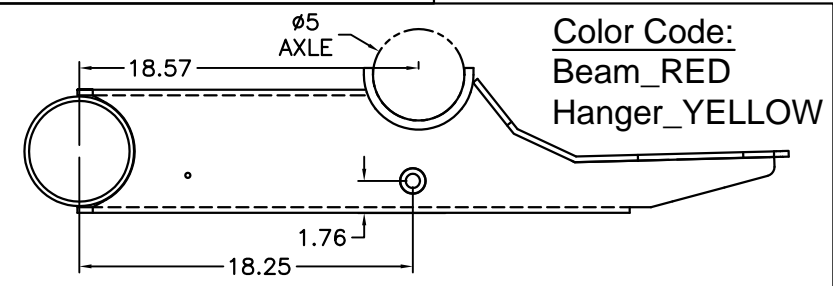
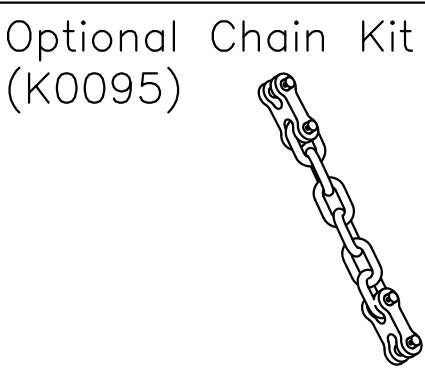


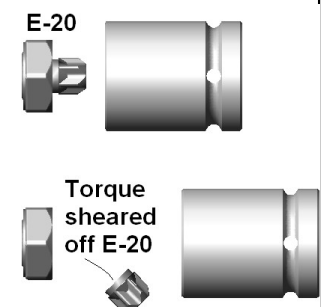
Fastener Torque Specs	Size	Thread	Grade	(Ft*Lbs)		(Nm)	
				Min.	Max.	Min	Max.
Air Spring Bottom Mount Bolt	1/2	13-UNC	5/B	40	50	54	68
Air Spring Top Mount Nut	3/4	16-UNF	5/B	40	50	54	68
Shock Mount Nut/Bolt	3/4	10-UNC	5/B	210	235	285	319
Pivot Nut (SecureLok/Securex)	7/8	9-UNC	8/C	550	600	746	813



Undermount Bolt head outside:
Adjust alignment before installing
tires, easier to get to w/Air Impact



Item	Description: CU-25-E09 Rev. E Parts	Cush P/ N:	Qty
1	Beam Assembly		
1a	Roadside (LH) Beam for Weld-on axle mount	W0216-3	1
1b	Curbside (RH) Beam for Weld-on axle mount	W0216-4	1
2	Frame Bracket, Wingless, Weld-on (4.75")		
2a	Roadside (LH) Hanger, Trak-Align, P=8" Tall Hanger	W0450-1	1
2b	Curbside (RH) Hanger, Trak-Align, P=8" Tall Hanger	W0450-2	1
3	Pivot Bushing Kit (Per Hanger)	K0334	2
3a	Bushing, 6.75" Long 1.25"ID	C0052	1
3b	Wear Washer, 0.25" thk	C0061	2
3c	Washer 0.875" SAE Thru-Hard	H2101	1
3d	AudiTorx HHCS 0.875"-9 UNC x 10"lg grd8	H0124	1
3e	Nut, SecureLok Nut 0.875"-9 UNC	H1106	1
3f	Bushing Insert, Reducer from 1.25" OD to 0.9"ID	T0063	2
4	Pivot Alignment Kit (Per Hanger)	K0335	2
4a	Alignment Washer, Eccentric w/Square Hole (Outer)	F0552	1
4b	Alignment Gear, Fixture/Bearing Plate (Inner)	F0626	1
5	Shock 17.75"Max/ 12"Min (Gabriel #85000)	K0130	2
5a	Shock HD 17.8"Max/12"Min	C0078	1
5b	HHCS, 0.75-10unc x 3.25"lg, Grd 5	H0204	1
5c	HHCS, 0.75-10unc x 9.5"lg, Grd 5	H0201	1
5d	Nut, Top-lock, 0.75-10unc, grd C	H1201	2
5e	Washer 3/4" ID, USS	H2203	1
Box of Parts: K0156		Cush P/ N:	Qty
6	Spacer Assembly, Top of Air Spring		
6a	0.19" Tall spacer Weld-on Plate	F0407	2
7	Air Spring, (Goodyear 1R12-467/Conti 9-10-19.5A801)	C0060	2
8	Kit, Air Spring Mounting	K0054	1
8a	HHCS, Flangelock 0.5-13UNC x 1"	H0304	8
8b	L'Nut, Nylock 0.75-16UNF	H1202	2



***AudiTorx (E20) Installation & Inspection Notes:**

- Required Materials: E-20 Torx socket, 1-5/16" nut wrench, Air Impact wrench capable of 600 ft*lbs (813 N*m) Minimum, alignment tools.
- If a Torx E-20 socket is not available, torque bolt nut per 7/8" Grade 8 spec (550-600ft*lbs)
- DO NOT APPLY undercoating to the suspension hanger area until after axle alignment and pivot torque has been applied.
- Cush does not recommend reuse of pivot fastener hardware once the pivot connection is disassembled, use a new bolt and nut.
- Check for proper tire clearance with fastener hardware. The AudiTorx bolt should be installed from the inboard side of the frame hanger to allow access with an air impact when tires are on, if tire clearance is an issue with fastener hardware, then the shear-type bolt head should be installed from the outboard side.
- NOTE: Check for any flashing or obstructions to cause the bearing washers to be raised and not allow flush mounting against the hanger sides (gear or eccentric type).
- Check proper axle alignment, see installation manual for instructions on alignment.
- Snug the pivot fasteners so that the alignment washers do not move while applying initial torque, recheck alignment.
- Torque the shear-type pivot bolt with the E-20 Torx drive socket tool until the bolt's Torx head shears off.
- The E-20 Torx drive socket should fully engage the Torx shear head before and while applying torque.
- Apply paint to the sheared away Torx area as a rust preventative.

DRAFTSMAN: jmk	1/02/05	PART LIST INSTALLATION SHEET
CHECKED: .	.	Cush Understung
RELEASED: .	.	25,000# Gross Suspension Weight Rating
WEIGHT: N/A		6"-9.5" Nominal Ride Height
		WELD- ON, WINGLESS HANGER MOUNT

MATERIAL: SEE PART DRGS.
TOLERANCE UNLESS OTHERWISE STATED:
X = +/- .12
XX = +/- .082
XXX = +/- .051
ANGLES = +/- 1°

www.cushcorp.com

SHEET 2 OF 3	SCALE: A-SIZE: NTS B-SIZE: D-SIZE:	REV: PART/DRAWING NO: E CU-25-E09	SPEC NO:
--------------	------------------------------------	-----------------------------------	----------

EC NO.	REVISION	DESCRIPTION	DATE	BY	CHK'D
	e	Updated Adjustment to Cam type "Trac-Align"	3-1-08	JMK	